

Snapshot of health system climate vulnerability and performance in...

Maryland

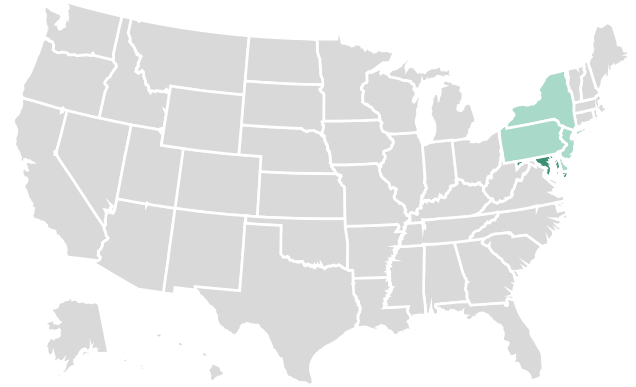


The
Commonwealth
Fund

Maryland ranks #7 overall.

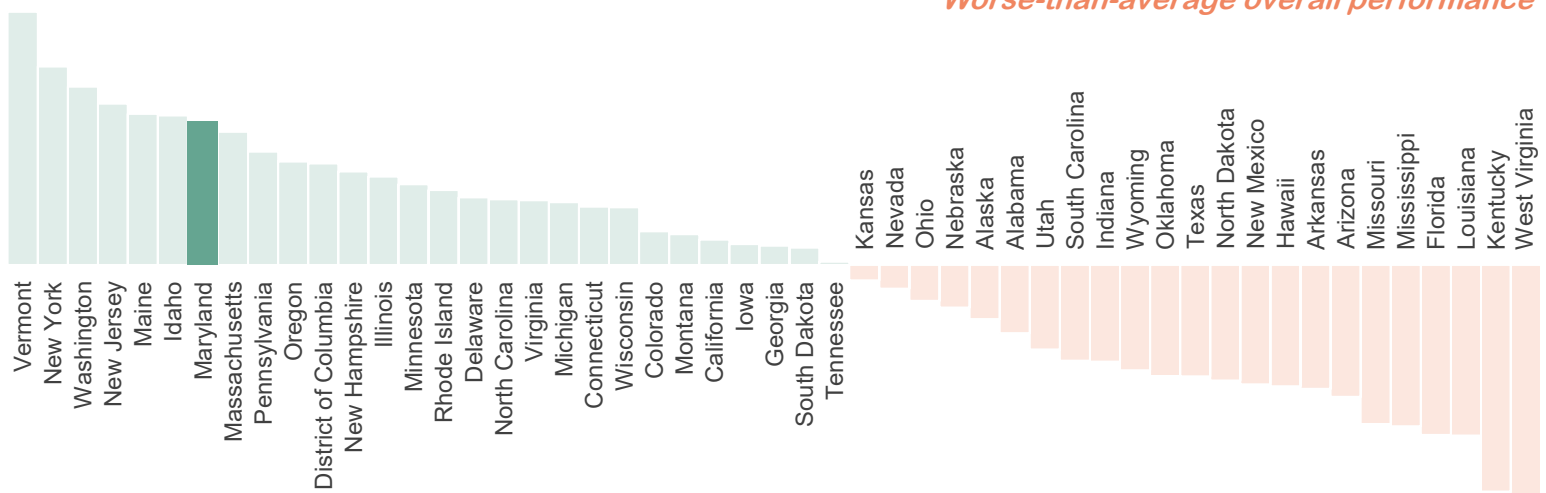
	National Rank	Rank Among Mid-Atlantic States*
Average Annual Air Quality Index	34 of 51	3 of 6
Health Risk from Extreme Heat	2	2
Health Care Facility Risk from Natural Hazards	19	4
Health Care Facility Flood Risk	12	2
State Energy Efficiency Policy	7	3
State Electricity Emissions and Their Health Impact	15	3
Health Care Sector Greenhouse Gas (GHG) Emissions	25	2
Health Care Worker Commuting Emissions	26	6

Maryland ranks #3 in the Mid-Atlantic region.



*Note: Mid-Atlantic region includes DE, DC, MD, NJ, NY, PA.

How Maryland Compares to All States



Better-than-average overall performance

Table 1. Indicators of State Health System Climate Vulnerability and Performance

Indicator	Data year	State rate	U.S. average	State rank
Average Annual Air Quality Index Scale of 0–500, with values below 100 generally considered good/moderate air quality	2022	42	42	34
Health Risk from Extreme Heat CDC/ATSDR ^a Heat and Health Index (0–1), with 1 indicating greatest risk	2024	0.39	0.51	2
Health Care Facility Risk from Natural Hazards FEMA ^b National Risk Index (0–100), with 100 indicating greatest risk	2023	47	54	19
Health Care Facility Flood Risk Percent of inpatient facility beds in high-hazard flood zones	2023	0.8%	2.5%	12
State Energy Efficiency Policy ACEEE ^c Energy Efficiency Scorecard (0–50), with 50 indicating best performance	2022	33	17	7
State Electricity Emissions and Their Health Impact Health impact per unit of electricity generated, ^d where lower values indicate less health impact from emissions	2021	0.332	0.464	15
Health Care Sector Greenhouse Gas (GHG) Emissions Kilograms of carbon dioxide equivalent (kg CO ₂ e) ^e	2020	1,294	1,362	25
Health Care Worker Commuting Emissions Transportation-related GHG emissions from health care facility employee commuting (kg CO ₂ e per employee)	2022	2,136	2,169	26



Maryland ranked best on:

Health Risk from Extreme Heat

People in Maryland are less likely to experience negative health impacts from extreme heat than residents of other states. This indicator covers sociodemographic and environmental factors in addition to historical heat exposure, given that people don't experience extreme heat equally.



Maryland ranked worst on:

Average Annual Air Quality Index

Residents of Maryland experience poorer average air quality than other states in a given year.

Notes: (–) Indicates missing data. (a) Centers for Disease Control/Agency for Toxic Substances and Disease Registry (CDC/ATSDR). (b) Federal Emergency Management Agency (FEMA). (c) American Council for an Energy-Efficient Economy (ACEEE). (d) Measured in Disability-Adjusted Life Years (DALYs) per gigawatt-hour (GWh) of electricity generated; DALYs are a common measure of the burden of disease, representing years of healthy life lost. (e) Kilograms of CO₂e stands for “carbon dioxide equivalent,” a standard measure of the warming effect of greenhouse gases.