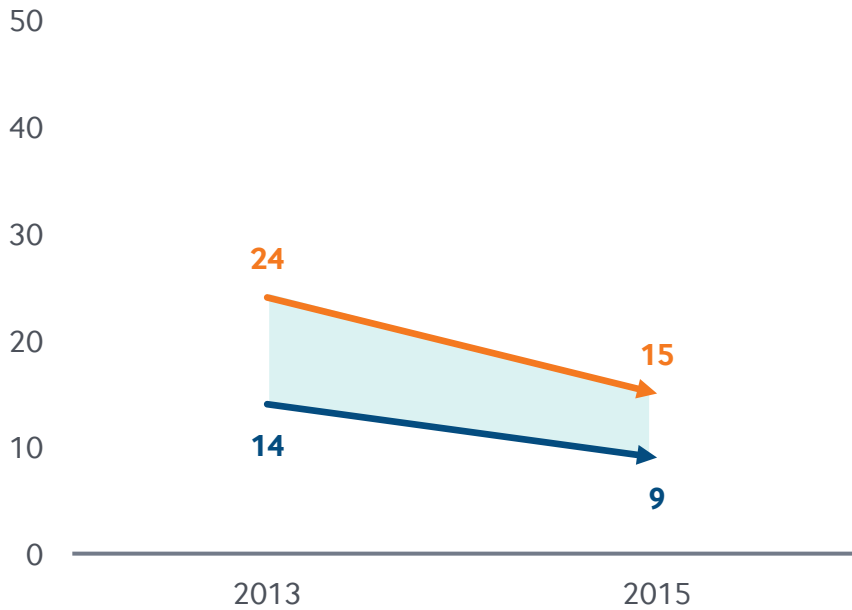


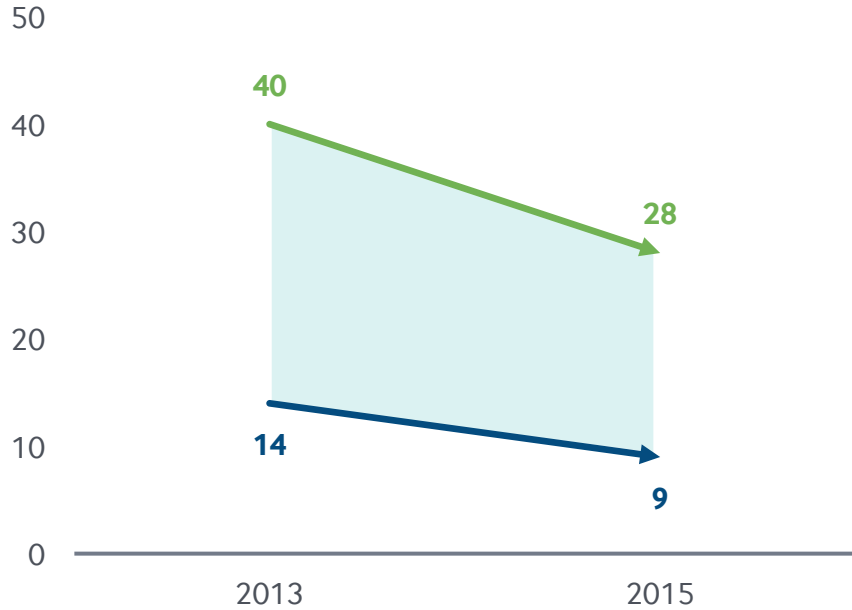
Racial and Ethnic Disparities in Adult Uninsured Rates Narrowed After the ACA's Major Coverage Expansions

Percent of uninsured adults ages 19–64, U.S. average

→ White adults → Black adults → Hispanic adults **Disparity**



Black–white disparity narrowed by 4 percentage points between 2013 and 2015



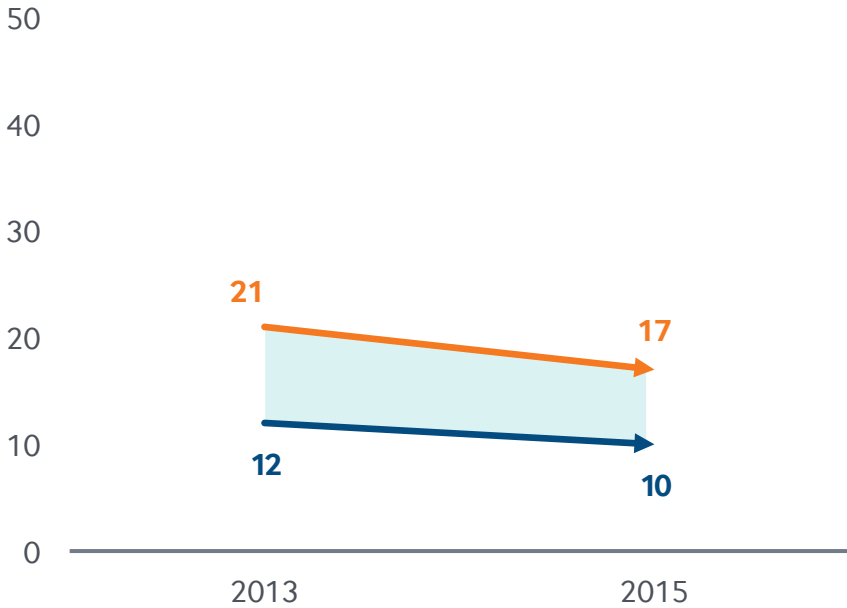
Hispanic–white disparity narrowed by 7 percentage points between 2013 and 2015

Data: Authors' analysis of U.S. Census Bureau, 2013 and 2015 1-Year American Community Surveys, Public Use Microdata Sample (ACS PUMS).

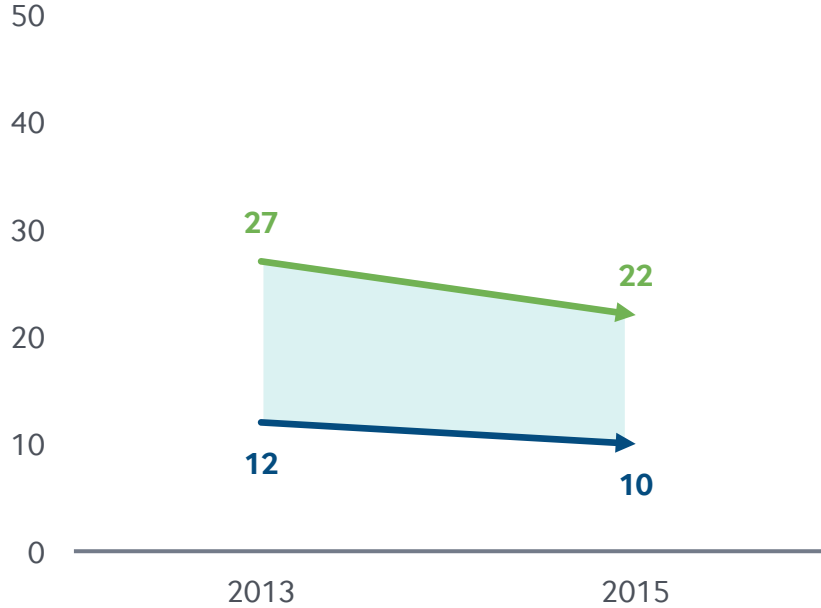
Racial and Ethnic Disparities in Rates of Adults Who Went Without Care Because of Costs Narrowed After the ACA's Major Coverage Expansions

Percent of adults age 18 and older who went without care because of costs, U.S. average

White adults Black adults Hispanic adults Disparity



Black–white disparity narrowed by 2 percentage points between 2013 and 2015



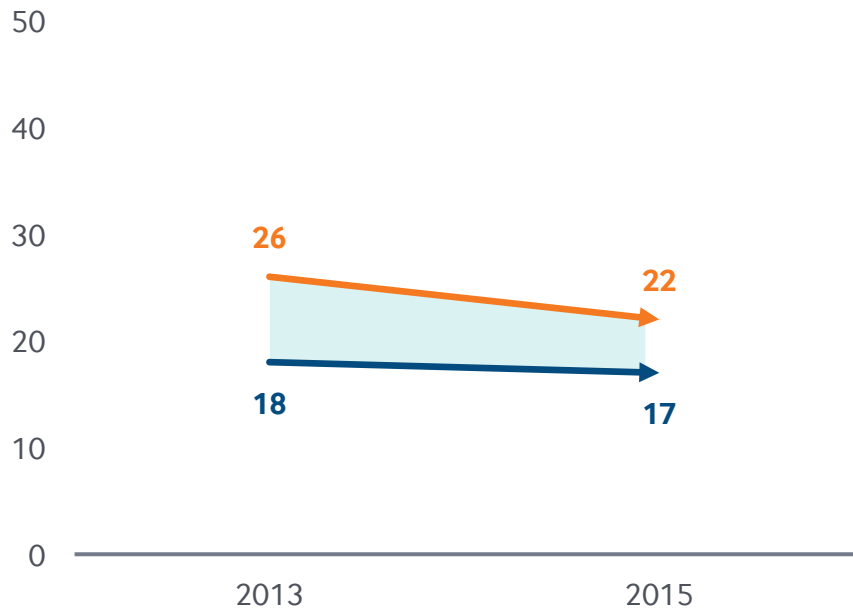
Hispanic–white disparity narrowed by 3 percentage points between 2013 and 2015

Data: Authors' analysis of 2013 and 2015 Behavioral Risk Factor Surveillance System (BRFSS).

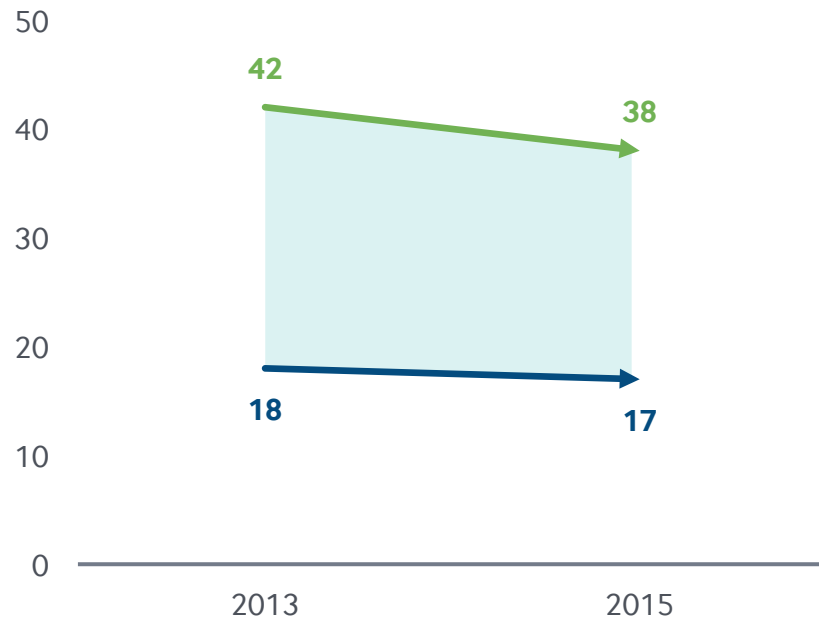
Racial and Ethnic Disparities in Rates of Adults Without a Usual Source of Care Narrowed After the ACA's Major Coverage Expansions

Percent of adults age 18 and older without a usual source of care, U.S. average

→ White adults
 → Black adults
 → Hispanic adults
 Disparity



Black–white disparity narrowed by 3 percentage points between 2013 and 2015



Hispanic–white disparity narrowed by 3 percentage points between 2013 and 2015

Data: Authors' analysis of 2013 and 2015 Behavioral Risk Factor Surveillance System (BRFSS).

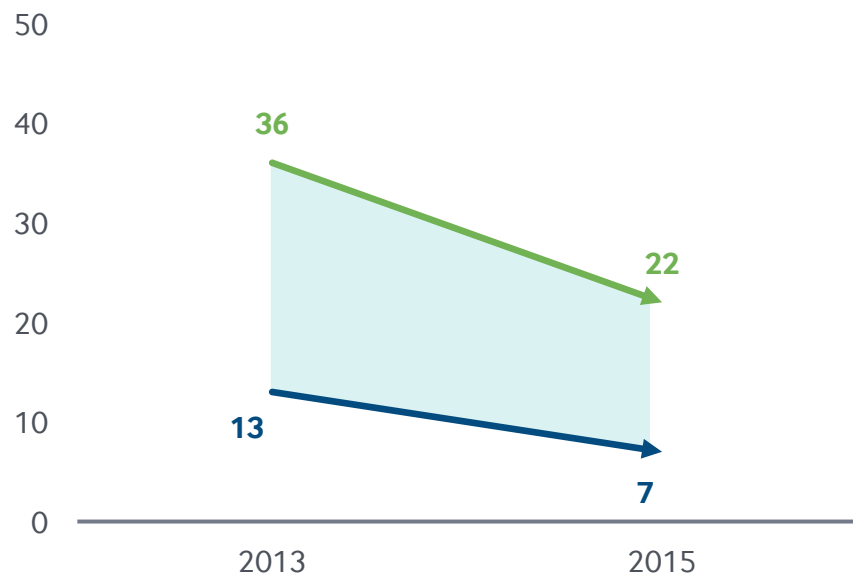
Disparities Between Hispanic and White Adult Uninsured Rates in Medicaid Expansion States vs. Nonexpansion States, 2013–2015

Percent of uninsured adults ages 19–64

→ White adults → Hispanic adults

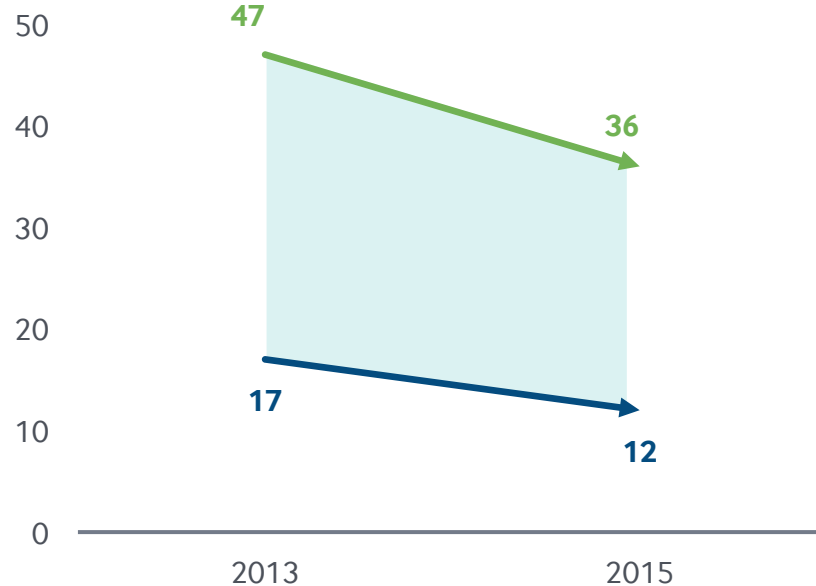
Disparity

Medicaid expansion states, average



Hispanic–white disparity narrowed by 8 percentage points between 2013 and 2015

Nonexpansion states, average



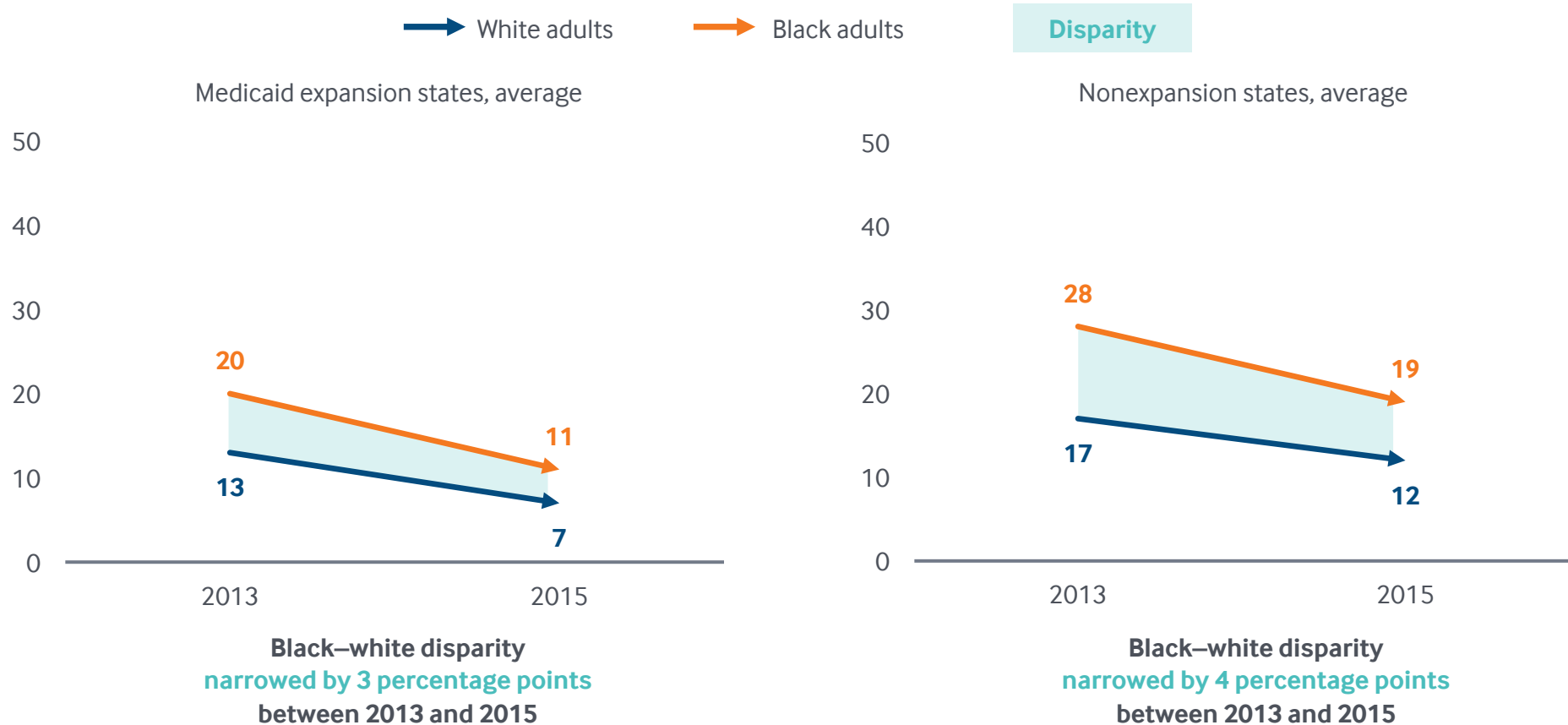
Hispanic–white disparity narrowed by 6 percentage points between 2013 and 2015

Notes: Medicaid expansion states include the 27 states and the District of Columbia that had expanded Medicaid under the Affordable Care Act as of January 1, 2015. Alaska, Indiana, Louisiana, and Montana expanded their Medicaid programs after that date.

Data: Authors' analysis of U.S. Census Bureau, 2013 and 2015 1-Year American Community Surveys. Public Use Microdata Sample (ACS PUMS).

Disparities Between Black and White Adult Uninsured Rates in Medicaid Expansion States vs. Nonexpansion States, 2013–2015

Percent of uninsured adults ages 19–64

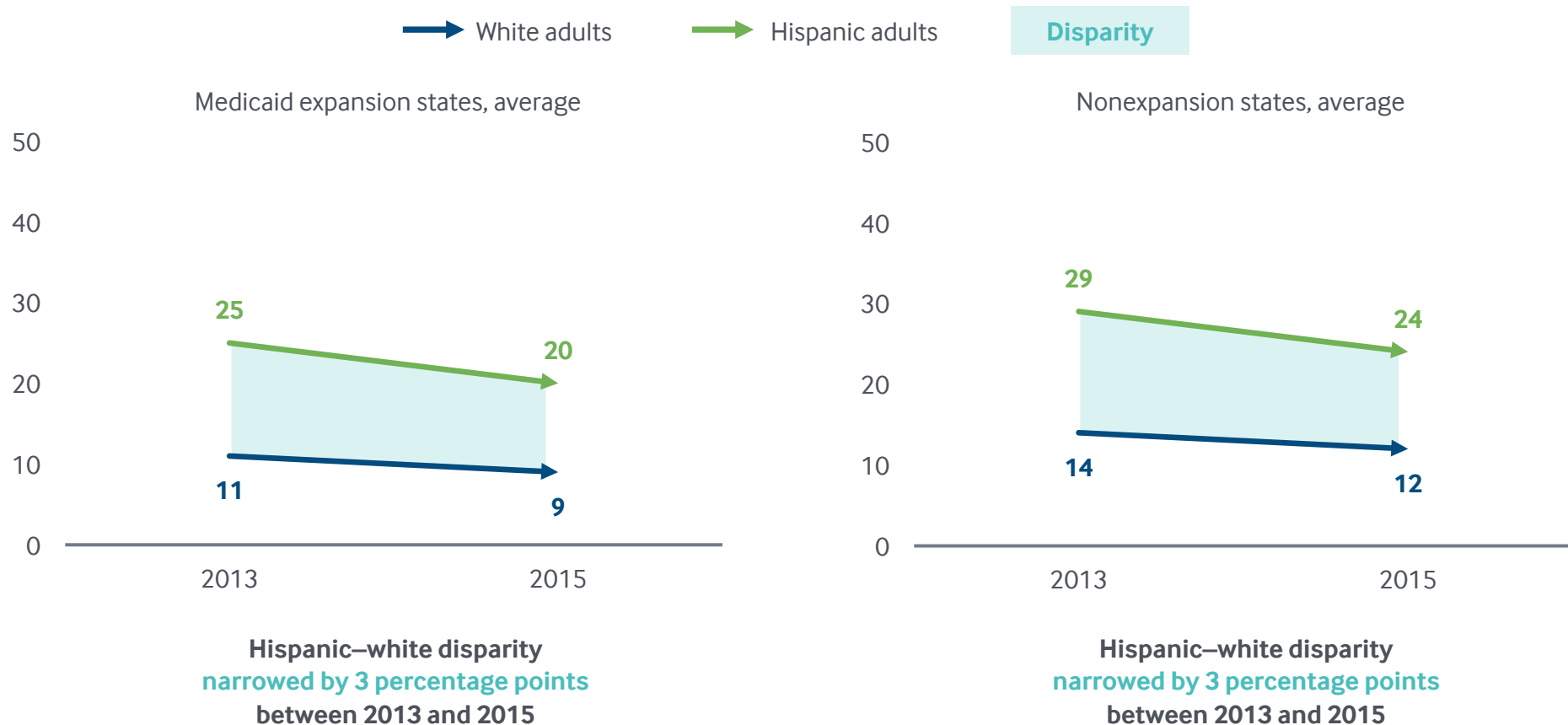


Notes: Medicaid expansion states include the 27 states and the District of Columbia that had expanded Medicaid under the Affordable Care Act as of January 1, 2015. Alaska, Indiana, Louisiana, and Montana expanded their Medicaid programs after that date.

Data: Authors’ analysis of U.S. Census Bureau, 2013 and 2015 1-Year American Community Surveys. Public Use Microdata Sample (ACS PUMS).

Disparities Between Hispanic and White Adults Who Went Without Care Because of Costs in Expansion States vs. Nonexpansion States, 2013–2015

Percent of adults age 18 and older who went without care because of costs in past year

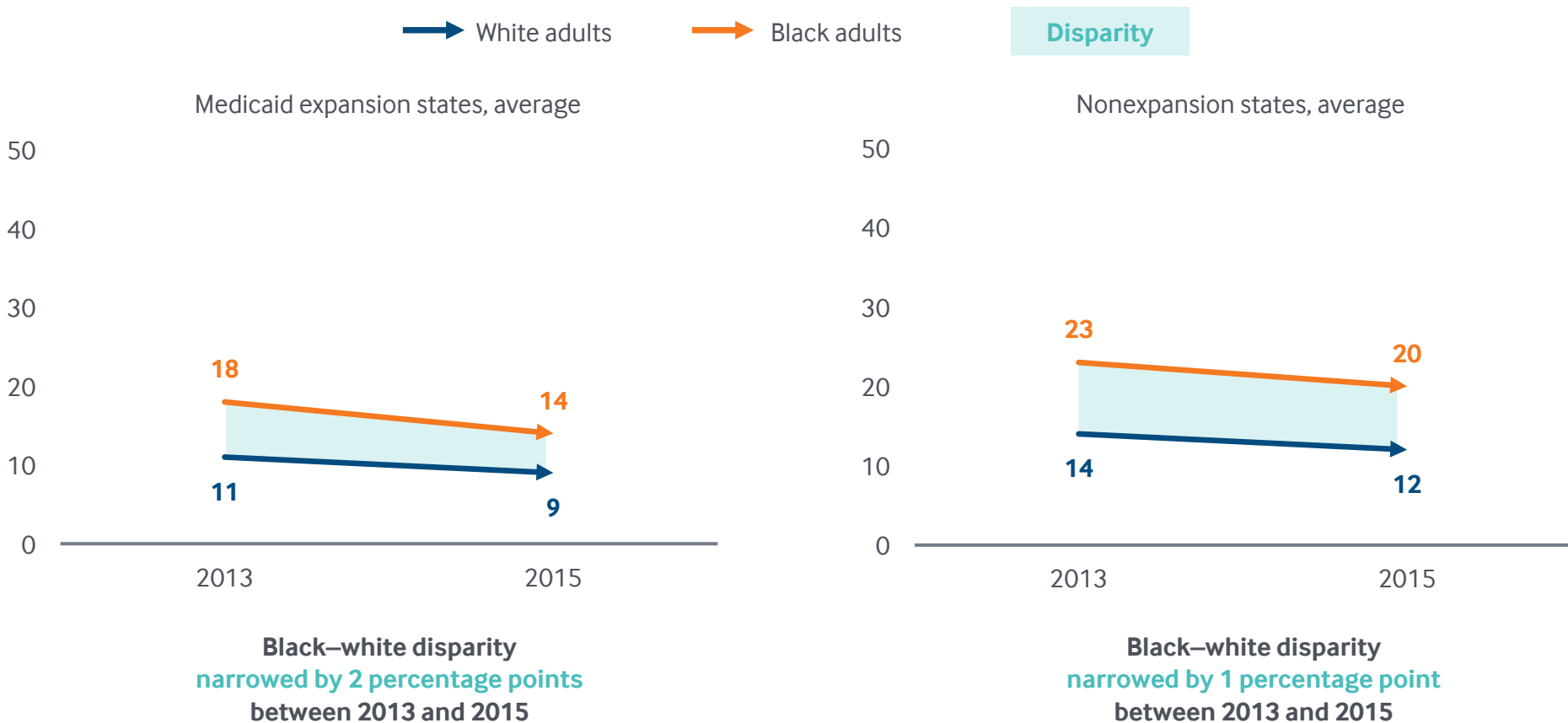


Notes: Medicaid expansion states include the 27 states and the District of Columbia that had expanded Medicaid under the Affordable Care Act as of January 1, 2015. Alaska, Indiana, Louisiana, and Montana expanded their Medicaid programs after that date.

Data: Authors' analysis of 2013 and 2015 Behavioral Risk Factor Surveillance System (BRFSS).

Disparities Between Black and White Adults Who Went Without Care Because of Costs in Expansion States vs. Nonexpansion States, 2013–2015

Percent of adults age 18 and older who went without care because of costs in past year

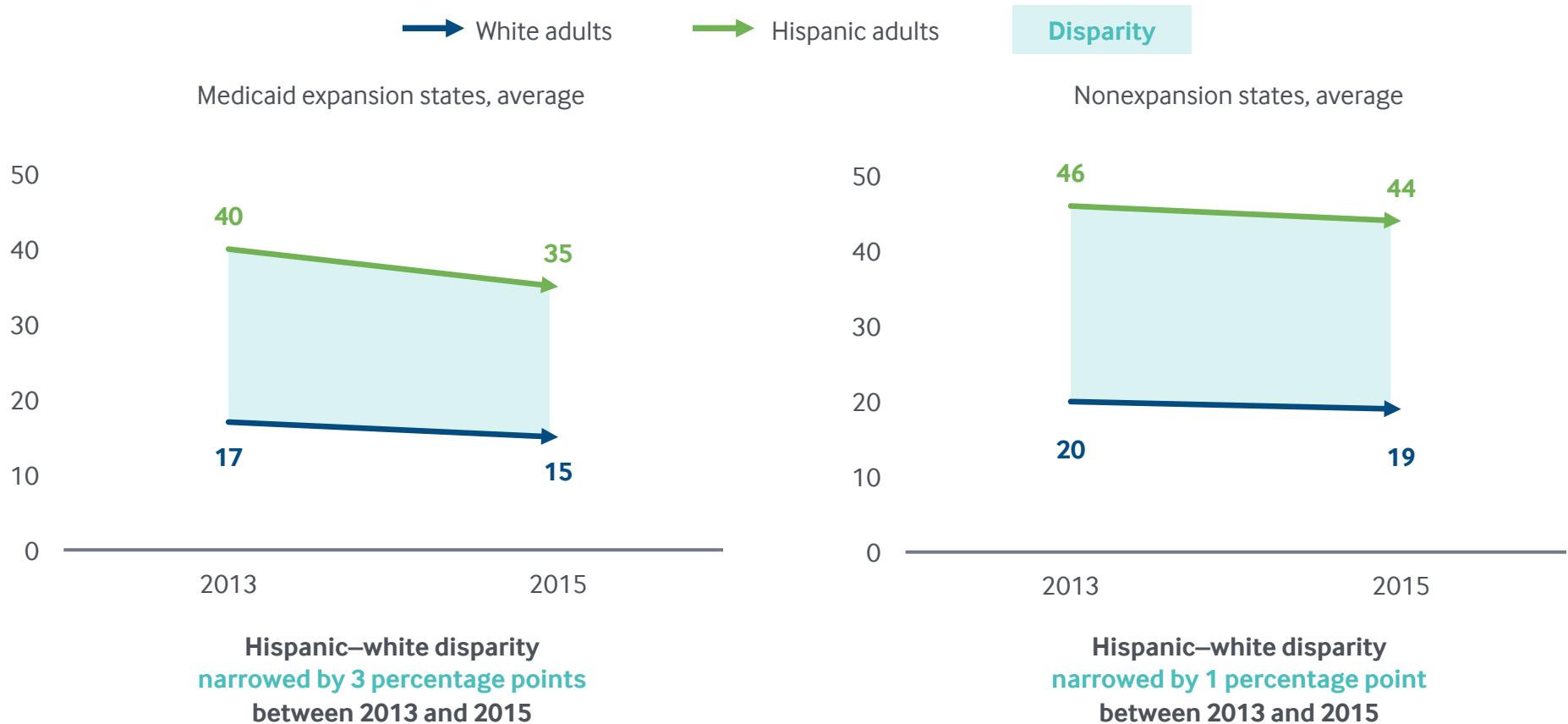


Notes: Medicaid expansion states include the 27 states and the District of Columbia that had expanded Medicaid under the Affordable Care Act as of January 1, 2015. Alaska, Indiana, Louisiana, and Montana expanded their Medicaid programs after that date.

Data: Authors' analysis of 2013 and 2015 Behavioral Risk Factor Surveillance System (BRFSS).

Disparities Between Hispanic and White Adults Without a Usual Source of Care in Medicaid Expansion States vs. Nonexpansion States, 2013–2015

Percent of adults age 18 and older without a usual source of care

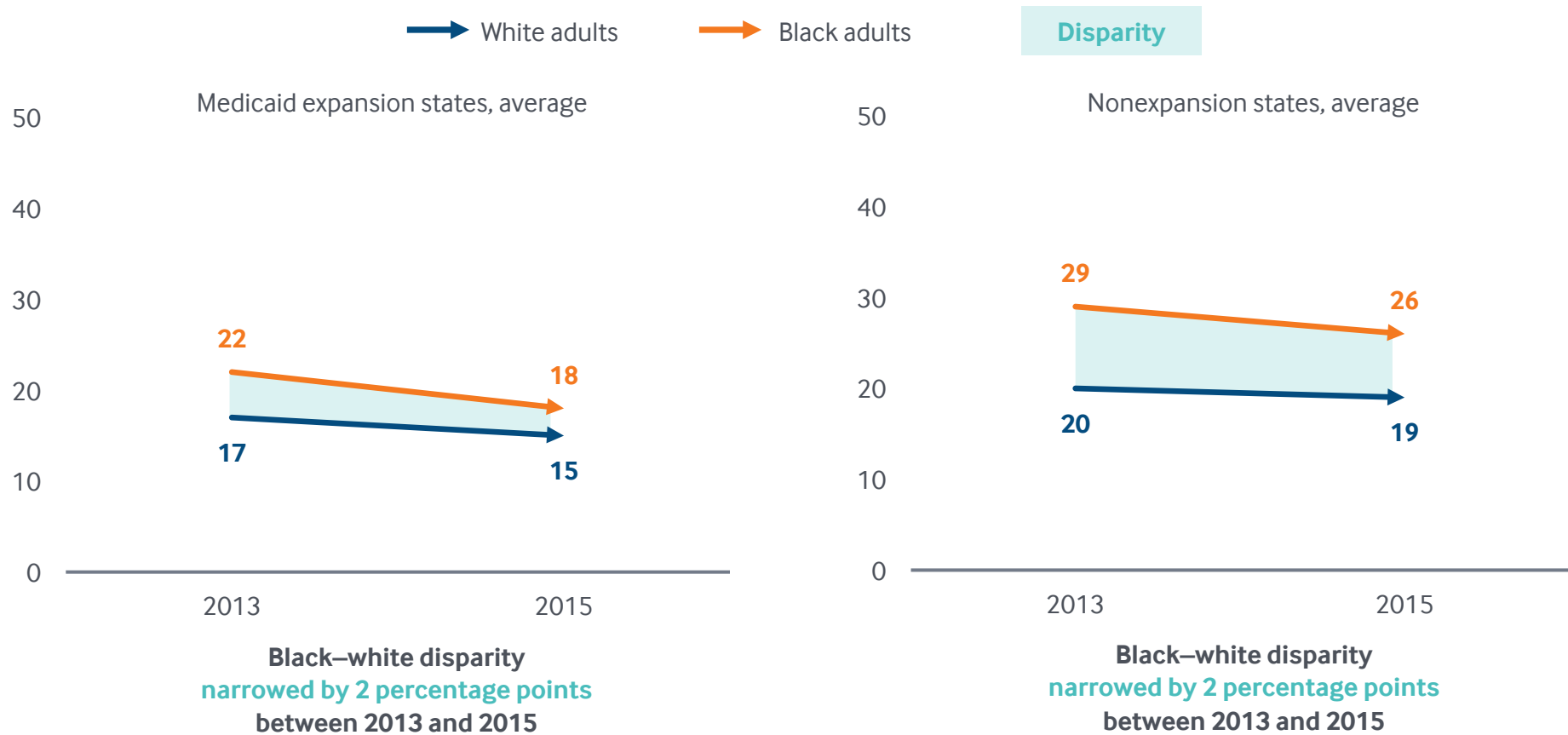


Notes: Medicaid expansion states include the 27 states and the District of Columbia that had expanded Medicaid under the Affordable Care Act as of January 1, 2015. Alaska, Indiana, Louisiana, and Montana expanded their Medicaid programs after that date.

Data: Authors' analysis of 2013 and 2015 Behavioral Risk Factor Surveillance System (BRFSS).

Disparities Between Black and White Adults Without a Usual Source of Care in Medicaid Expansion States vs. Nonexpansion States, 2013–2015

Percent of adults age 18 and older without a usual source of care



Notes: Medicaid expansion states include the 27 states and the District of Columbia that had expanded Medicaid under the Affordable Care Act as of January 1, 2015. Alaska, Indiana, Louisiana, and Montana expanded their Medicaid programs after that date.

Data: Authors' analysis of 2013 and 2015 Behavioral Risk Factor Surveillance System (BRFSS).